

## Light efficiency:

**110 Lumen/Watt**

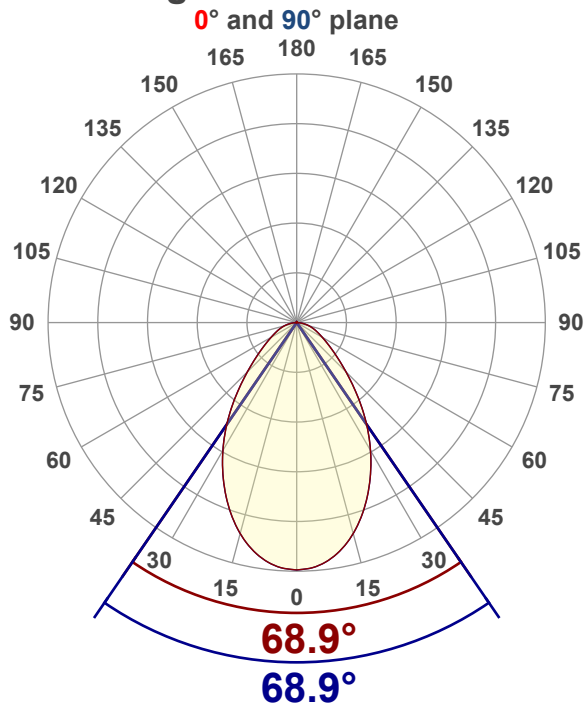
## Color temperature:

**4150 K**

## Light quality:

**CRI:83.2, R<sub>g</sub>:91.4, R<sub>f</sub>:82.4****P: - / V: - / F: -****Output: 4241 lm****Peak: 2826 cd****Power: 38.5 W****Voltage: 121 V****Current: 0.320 A****PF: 0.99****THD: 6.13 %**

## Angular Distribution



Product name:

**EDGE-33-WH - DLC - 40K 40W**

Test Date:

**2019-05-29**

Beam Angle (50% of the brightness of the centre):

**68.9°**

Field Angle (10% of the brightness of the centre):

**127.2°**

Cut Off Angle (2.5% of the brightness of the centre):

**163.8°**

## Beam Details

\*measured at centre of beam

Mounting Height (feet)\(meter)	Lux*	Footcandles*	Beam width (feet) / (meter)
4 ft / 1.2 m	1901 lx	177 fc	5.5 ft / 1.7 m
8 ft / 2.4 m	475 lx	44 fc	11 ft / 3.3 m
12 ft / 3.7 m	211 lx	20 fc	16.5 ft / 5 m
16 ft / 4.9 m	119 lx	11 fc	22 ft / 6.7 m
20 ft / 6.1 m	76 lx	7 fc	27.4 ft / 8.4 m

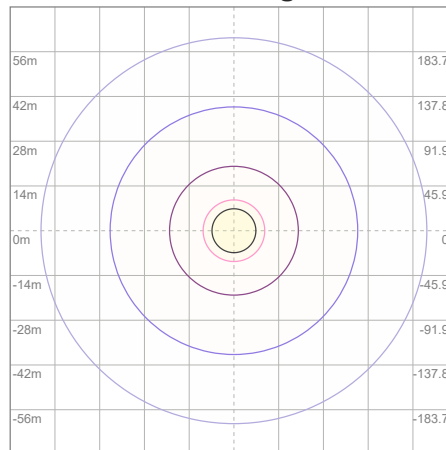
Beam center

## Photometric Testing Report

## Zonal Lumen Summary

Zone	Lumen	%Luminaire
0-30	1871	44.12%
0-40	2726	64.28%
0-60	3750	88.42%
60-90	461	10.87%
70-100	202	4.76%
90-120	11.8	0.28%
0-90	4212	99.32%
90-180	29.7	0.70%
0-180	4241	100.00%

## ISO Lux Diagram



Lux at center:	304 lx
3%	9.12 lx
5%	15.20 lx
10%	30.40 lx
30%	91.20 lx
50%	152.00 lx

**Conditions:**  
 Number of planes: 8  
 Lux distribution on a surface when lamp is mounted at 3.05 meters from the surface.

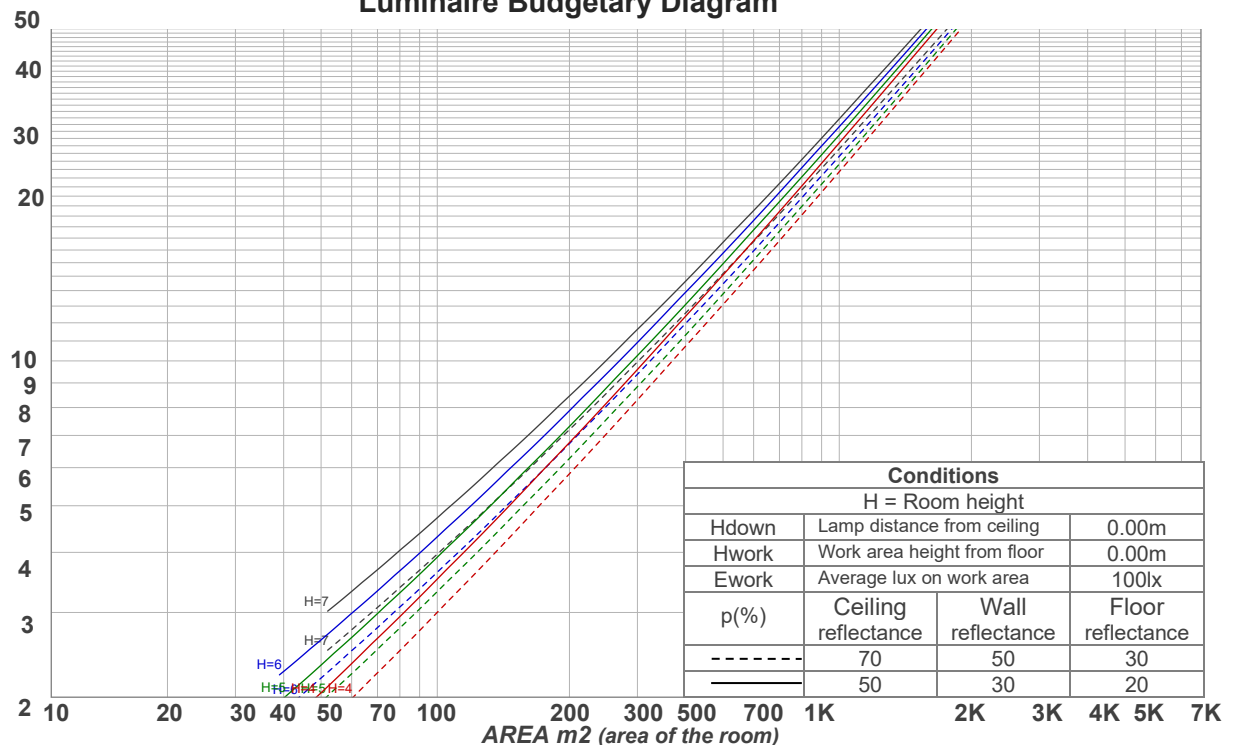
Mounting height: 3.05 meters (10 feet)

## Coefficients of Utilization

Ceiling reflectance	80				70				50			30			10			0
Wall reflectance	70	50	30	10	70	50	30	10	50	30	10	50	30	10	50	30	10	0
Floor reflectance	20	20	20	20	20	20	20	20	20	20	20	20	20	20	20	20	20	0
RCR	(RCR: Room Cavity Ratio)				Room Values are expressed as percentage of Lumens delivered to the task surface													
0	119	119	119	119	116	116	116	116	111	111	111	106	106	106	101	101	101	99
1	111	107	103	100	108	105	101	98	100	98	95	96	94	92	93	91	89	87
2	103	96	90	86	100	94	89	85	90	86	83	87	84	81	84	81	79	77
3	95	87	80	74	93	85	79	74	82	77	72	79	75	71	77	73	70	68
4	89	79	71	66	87	77	70	65	75	69	64	73	67	63	70	66	62	61
5	83	72	64	58	81	71	63	58	69	62	57	67	61	57	65	60	56	54
6	77	66	58	53	76	65	58	52	63	57	52	62	56	51	60	55	51	49
7	72	61	53	48	71	60	53	48	58	52	47	57	51	47	56	51	47	45
8	68	56	49	44	67	56	48	43	54	48	43	53	47	43	52	47	43	41
9	64	52	45	40	63	52	45	40	51	44	40	50	44	40	49	43	39	38
10	61	49	42	37	59	48	42	37	47	41	37	46	41	37	46	40	36	35

LAMPS (number of lamps)

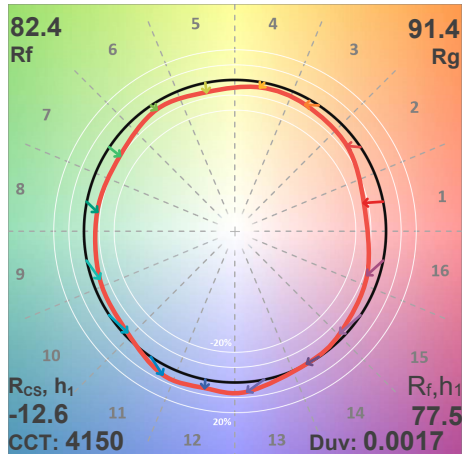
## Luminaire Budgetary Diagram



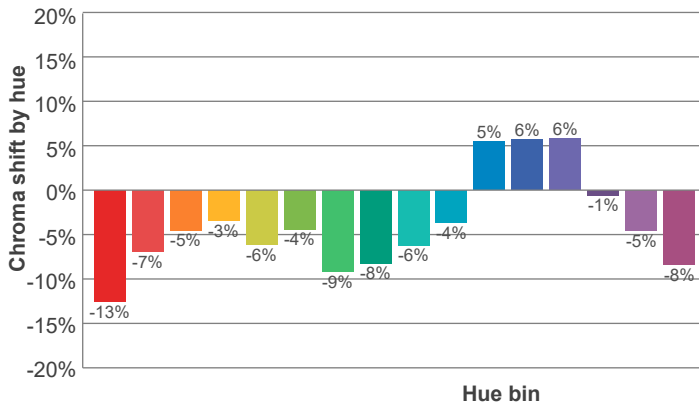
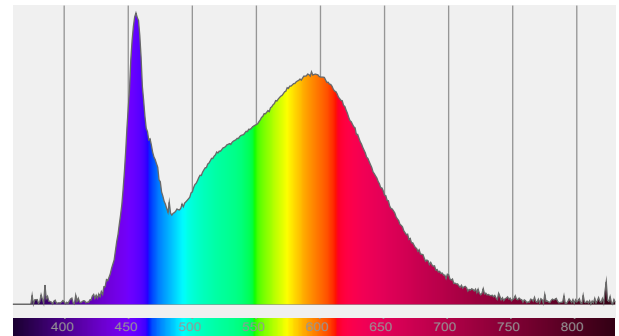
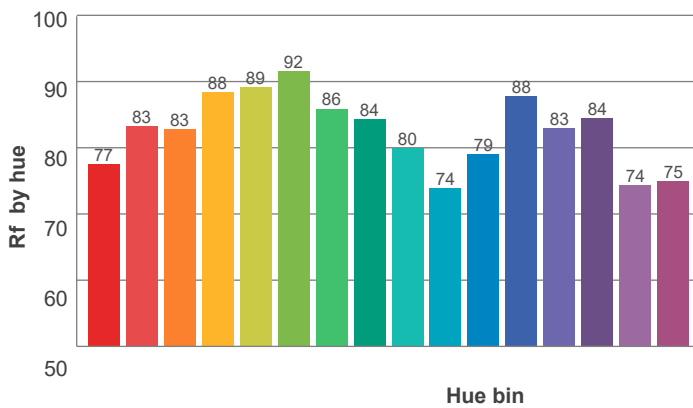
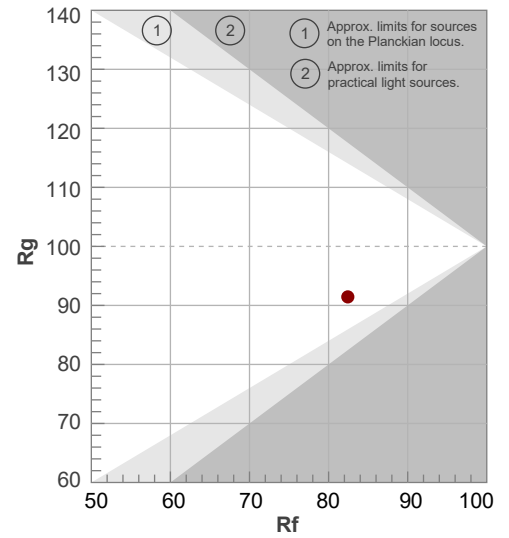
## Photometric Testing Report

ANSI/IES TM-30-18

P: - / V: - / F: -



Hue Bin	R <sub>f</sub>	Shifts (%)	
		Chroma	Hue
1	77	-13%	2%
2	83	-7%	6%
3	83	-5%	8%
4	88	-3%	2%
5	89	-6%	0%
6	92	-4%	-2%
7	86	-9%	1%
8	84	-8%	5%
9	80	-6%	13%
10	74	-4%	16%
11	79	5%	13%
12	88	6%	1%
13	83	6%	-13%
14	84	-1%	-9%
15	74	-5%	-17%
16	75	-8%	-11%



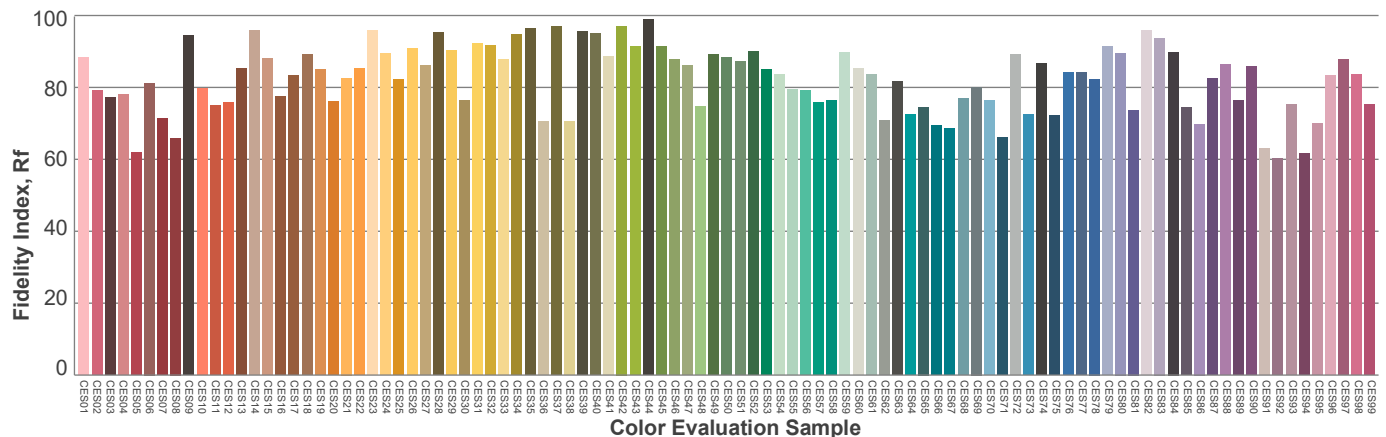
Red: 20.5%, Power=15.9mW

Blue: 17.9%, Power=47.1mW

Green: 30.4%, Power=54.3mW

UVA: 0.3%, Power=2.8mW

Dominant Wavelength: 580nm

1<sup>st</sup> Peak Wavelength: 456nm2<sup>nd</sup> Peak Wavelength: 593nm

## Glare Evaluation According to UGR

Corrected, comprehensive UGR table according to 117-1995, S/H ratio=0.25

p Ceiling		70	70	50	50	30	70	70	50	50	30
p Walls		50	30	50	30	30	50	30	50	30	30
p Floor		20	20	20	20	20	20	20	20	20	20
Room size H = mounting height above eye level  X      Y		Viewing direction at right angles to lamp axis					Viewing direction parallel to lamp axis				
2H	2H	12.8	13.8	13.0	14.1	14.3	12.8	13.8	13.0	14.1	14.3
	3H	13.7	14.7	14.1	15.0	15.2	13.7	14.7	14.1	15.0	15.2
	4H	14.2	15.1	14.6	15.4	15.7	14.2	15.1	14.6	15.4	15.7
	6H	14.6	15.5	14.9	15.8	16.1	14.6	15.5	14.9	15.8	16.1
	8H	14.7	15.6	15.1	15.9	16.3	14.7	15.6	15.1	15.9	16.3
	12H	14.8	15.6	15.2	15.9	16.4	14.8	15.6	15.2	15.9	16.4
4H	2H	13.1	14.1	13.5	14.4	14.6	13.1	14.1	13.5	14.4	14.6
	3H	14.4	15.2	14.7	15.5	16.0	14.4	15.2	14.7	15.5	16.0
	4H	14.9	15.6	15.3	16.1	16.6	14.9	15.6	15.3	16.1	16.6
	6H	15.4	16.1	15.9	16.5	16.9	15.4	16.1	15.9	16.5	16.9
	8H	15.6	16.3	16.1	16.6	17.0	15.6	16.3	16.1	16.6	17.0
	12H	15.7	16.2	16.2	16.7	17.1	15.7	16.2	16.2	16.7	17.1
8H	4H	15.1	15.8	15.6	16.2	16.5	15.1	15.8	15.6	16.2	16.5
	6H	15.8	16.3	16.3	16.8	17.3	15.8	16.3	16.3	16.8	17.3
	8H	16.1	16.5	16.6	17.0	17.7	16.1	16.5	16.6	17.0	17.7
	12H	16.3	16.6	16.8	17.1	17.7	16.3	16.6	16.8	17.1	17.7
12H	4H	15.1	15.7	15.6	16.1	16.6	15.1	15.7	15.6	16.1	16.6
	6H	15.9	16.3	16.4	16.8	17.5	15.9	16.3	16.4	16.8	17.5
	8H	16.2	16.5	16.8	17.0	17.6	16.2	16.5	16.8	17.0	17.6
Variation of the observer position for the luminaire distance S											
S = 1.0H		0.2 / -0.3					0.2 / -0.3				
S = 1.5H		0.6 / -0.6					0.6 / -0.6				
S = 2.0H		1.1 / -0.9					1.1 / -0.9				
Corrected glare indices referring to 4241 lm total luminous flux											